

December 12, 2007

Christmas Guild Meeting: The Usual Suspects

Meeting second Monday of each month at St. Thomas More Catholic Church 2900 Kimball Ave Manhattan, Kansas

Social time at 8:30 a.m.; meeting begins at 9 a.m.

www.kpqg.com

KONZA PRAIRIE QUILTERS' GUILD NEWSLETTER
EDITOR: JENNIE BURDEN

Prairie Pointer

December 10: Christmas and regular Show and Tell, Christmas Brunch, Karen Spaeth trunk show.

January 14: Members are to be reminded to bring items for the auction. As with last year, items need to be a grouping of related objects or selections of quilt related things. Auction items may be presented in a basket, gift box, or similar container. Some examples include fat quarters, a pattern with a suitable fabric, notions, or a small kit. Be creative and have fun!

Members are encouraged to attend the January meeting as the auction is always a fun and exciting time for everyone.

Options for garage sale items will be made available at a later date.

December Refreshments

It is your responsibility to bring refreshments during your assigned month or trade with someone else.

Norma Larson
Clessie LeMay
Jane Lord
Mary Jo Kurtz
Ann Langham
Dona Koster
Norma Louk

Lisa Lang
Frieda Mauthe
Ann Lee
Charlotte Major
Delia Marcellus
Karen Malone

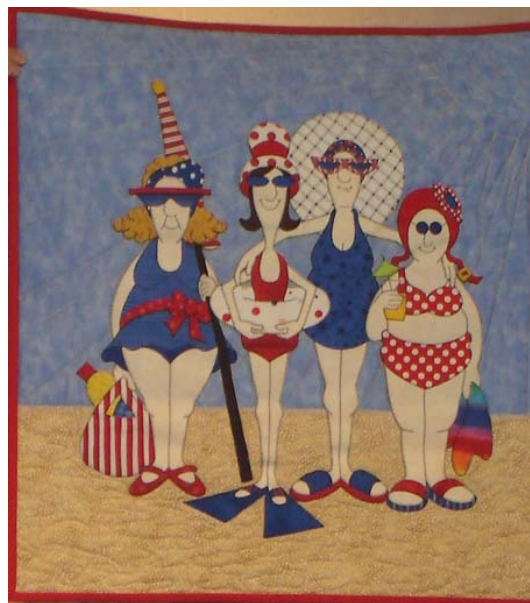


Twila Hoffman and her Peppermint Swirl table runner

2008 Dues of \$35 are due now. All members paid by December meeting are eligible for a drawing for one free membership.



Left: Amy Bradley, November speaker. Right: Amy's Bountiful Beauties.



December Birthdays

Dorine Elsea	2
Cheryl Barnette	2
Donna Dawson	8
Kay Ring	10
Dee Gerardy	13
Carolyn Fellows	15
Jane Hebert	16
Nancy Graves	17
Nancy Roth	24
Anne Emerson	25
Debbie Baer	25
Marcella Bechard	30



December birthday gals: Dorine Elsea, Nancy Graves, Kay Ring.

Member Profile: Dorris Beckenhauer

Dorris Beckenhauer was born in Manhattan, attended KSU for a BS in home economics and art, then MS in clothing, textiles and interior design, and also a MS in education. She has been married to Neil for 64 years. They have 2 children and 5 grandchildren.

Dorris worked at Duckwall's while in school. Then she taught in a secondary school and later adult classes for the Air Force as well as vocational classes. She worked as a real estate sales person but is now retired. She works bingo for the American Legion auxiliary and enjoys ceramics, painting and gardening in addition to quilting.

Her first quilt project was at age 4 with a cross stitch quilt on



a footstool with child work basket and Mrs. West (neighbor). "Every day she told me to never put pins or needles in my mouth." Dorris says her favorite completed project is that she designed and built 2 houses they lived in, including the present one. She also set up an endowed scholarship honoring her mother through the American Legion Auxiliary. Her mother was a charter member.

She likes machine pieced quilts and hand quilting along with appliqué. She likes quilting because of the design challenge. She would like to learn to machine quilt. There are two special patterns she really wants to make: a quilt with original flower designs and a tree of life with painted birds.

Dorris has held several jobs in this guild, including treasurer, chairing a quilt show and refreshments at a quilt show. She likes all the meetings and workshops, especially show and tell. "I admire the work of members and how much they accomplish."

Patchwork Pieces

Friendship Quilts for Treasurer/Editor

Twila: 10½" block, unfinished, using a heart design (patchwork, appliqué, embroidery or whatever you do best) in pastel colors on a light or cream tone on tone fabric for background.

Jennie: 9½" block, unfinished, any pattern, using green, brown, gold and red colors that match a particular fabric (available at guild meetings).

Every Thursday from 11 am-3 pm a group meets at the Riley County Senior Center to sew, quilt and visit. Lunch is on your own.

Quilts From the Heart meets **every third Tuesday** at the Bernina Shoppe from 10am until 3pm.

Quilts of Valor meets **every second Tuesday** (10-3) to work on quilts for wounded soldiers. Space is limited, so please pre-register.

Fourth Monday: 9:30—3. Riley Co. Senior Service Center. No classes until March.

2008 Challenge is Crazy Quilting

The KPQG challenge theme is crazy quilting and is due in April, 2008. This is an opportunity to explore new embellishment materials and techniques while using a variety of different fabrics.

A kit of various embellishment materials is available, and the final project should include at least three items from the kit and be at least 8" x 8". It might be a pillow top, wall hanging, wedding album cover, table runner, special placemat, ring pillow for a wedding, bag, hat, vest or other garment.

Those who have signed up may pick up their kits and pick out some fabrics at the December meeting. If you wish to participate but have not signed up, please contact Ronna Robertson (770-8305), drobert1@ksu.edu, to request your kit. The participation fee is \$3.



Geraldine Foutz made this scrappy quilt using fabric up to 50 years old.

Bits 'n' Pieces

- ~ The librarians will NOT be bringing the library books to the December meeting but will be happy to take back any that members want to return.
- ~ Sometime this spring, probably April, May and June, we won't have access to St. Thomas More Church due to construction. We will meet at First Presbyterian Church instead. As the time draws closer, we will have definite dates.
- ~ For board meeting/lunch on December 17, the incoming and outgoing board members will meet for a potluck at the Westbank Townhome clubhouse at 11:30 to turn over notebooks and duties.



Nancy Graves' Spinning My Wheels.

Everything Old is New Again

KPQG will host an exhibit of quilts and wall hangings in the main gallery of Manhattan Arts Center July 19-August 30. Our theme is "Everything Old is New Again," taking traditional quilt patterns and using them in new ways. This may be by re-drafting the pattern, using modern techniques or altering the traditional color schemes.

The opening reception will be Friday, July 18.

KPQG members are encouraged to look at their existing quilts and plans for new projects as we prepare for this exhibit. It has been 4 years since we've exhibited at the MAC, and we want this show to be reflective of the innovative ways that quilting takes place in our community.

BASKET QUILT: January

Cut the following:

Background fabric: Number 1

1 square: $2\frac{1}{2}$ " x $2\frac{1}{2}$ "

1 square $2\frac{7}{8}$ " x $2\frac{7}{8}$ "

2 rectangles $4\frac{1}{2}$ " x $2\frac{1}{2}$ "

1 square $4\frac{7}{8}$ " x $4\frac{7}{8}$ ", then cut in half diagonally

2 rectangles $6\frac{1}{2}$ " x $2\frac{1}{2}$ "

Dark or solid fabric: Number 2

2 squares $2\frac{7}{8}$ " x $2\frac{7}{8}$ "; cut one in half diagonally

1 square $6\frac{7}{8}$ " x $6\frac{7}{8}$ ", cut in half diagonally

4 squares $2\frac{1}{2}$ " x $2\frac{1}{2}$ "

Print fabric:

1 square $6\frac{7}{8}$ " x $6\frac{7}{8}$ "; cut in half diagonally

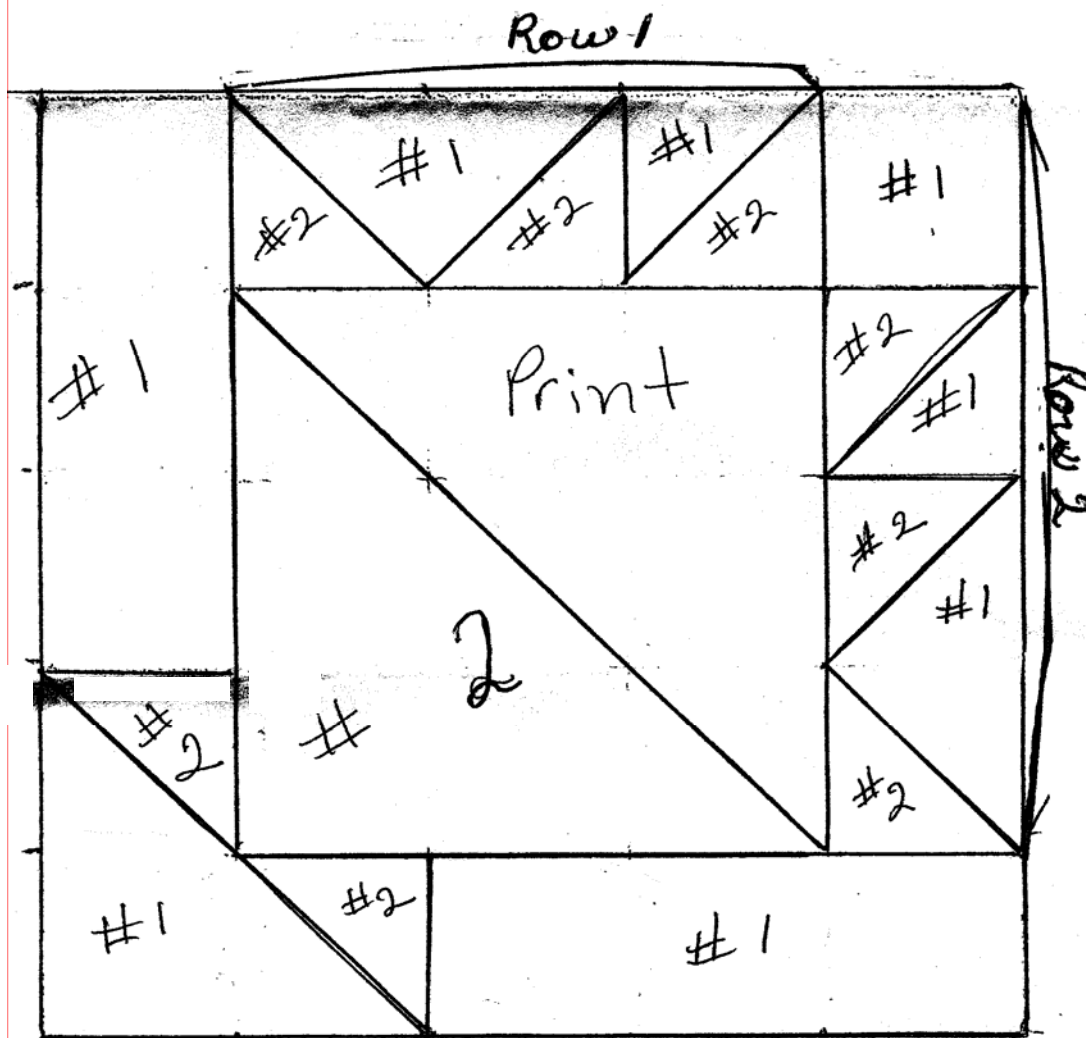
Make two flying geese units by placing a $2\frac{1}{2}$ " square on the end of a $4\frac{1}{2}$ " x $2\frac{1}{2}$ " rectangle, right sides together. Draw a diagonal line across the square and stitch on the line. Trim the excess fabric to $\frac{1}{4}$ " and press. Repeat on the opposite corner of the rectangle.

Make two half-square triangles by placing a background $2\frac{7}{8}$ " square and a dark $2\frac{7}{8}$ " square right sides together and draw a line diagonally across the square. Sew $\frac{1}{4}$ " on either side of the line. Cut on the drawn line. Press toward the dark fabric.

Assemble by sewing the two large triangles to make a large square. Construct row 1 and row 2 following the diagram and sew to the large square.

Sew one $2\frac{7}{8}$ " triangle to the end of each $6\frac{1}{2}$ " x $2\frac{1}{2}$ " rectangle as pictured and sew to the large square completed in the preceding step.

Add the $4\frac{7}{8}$ " triangle to finish the block.



2008 Officers

President: Eloise Brown

Vice President/Program Chair: Dee Gerardy

Program chairperson/Vice President elect: Pat King
Committee members: Carolyn Fellows, Dorine Elsea,

Nancy Venburg, Margie Young

Treasurer: Twila Hoffman

Secretary: Sue Jones

Members at Large: Susie Wong, Mary Jo Kurtz,
Carol Sheehe

Newsletter editor: Jennie Burden

Editor in training: Virginia Bennett

Committees:

Quilts From the Heart: Bonnie Olsen, Donna
Dawson, Marcella Bechard, Norma Larson, Toni
Haukom, Mary Corah, Cathy Cholick

Refreshment: Kay Ring, Geraldine Fouts, Nayola
Norris, Betty Shaw

Block of the Month: Geraldine Fouts

Challenge Quilt: Carol Pacey

Library: Doris Beckenhauer, Anne Collins, Jan
Carl, Callie Hildebrand

Newsletter circulation: Jeanne Powell

Opportunity Tickets: Karen Spaeth, Janice Klink

Construct Opportunity Quilt: Margie Young,
Harriette Janke

Quilting location: Kevin Deets

Greeters: Kay Hummels, Harriette Janke, Nadith
Reinhardt

Membership Directory: Twila Hoffman

2008 Mini Quilt Auction:



Correction: Manhattan High School wall hanging was made by Carolyn Fellows, not Dreiling.



Stack 'n' Whack by Eloise Brown.

Free quilt patterns on the web:

<http://quilting.about.com/>

<http://www.victorianaquiltdesigns.com/>

<http://www.quilterscache.com/>

On the Road**Quilt Shows & Events of Interest**

Thru Dec 16 Let Me Show You the World: The Sewn Drawings of China Marks, Beach Museum of Art, KSU campus, Manhattan

Thru Jan 13 Art of the Needle: Masterpiece Quilts from the Shelburne Museum at the Wichita Art Museum, 1400 W. Museum Blvd, Wichita. Information:
www.wichitaartmuseum.org or 316-268-4921

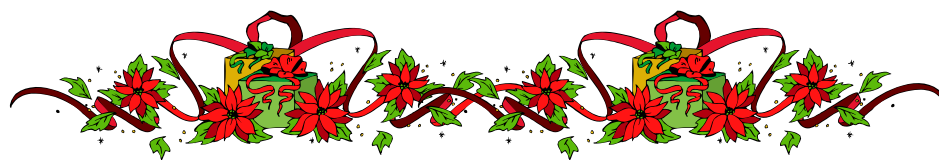
Thru Jan 6 Women's Work: The Paper Doll Quilts of Rebekka Seigel Exhibit, Montezuma, KS
www.stauthmemorialmuseum.org or 620-846-2527.

2008

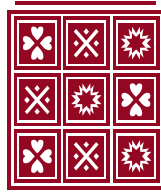
June 20-22 Common Threads Quilt Show, Prairie Quilt Guild, Expo Hall, Wichita, KS.
Www.pgqks.com/quiltshow2008.html

KONZA PRAIRIE QUILTERS' GUILD
BOX 271
MANHATTAN KS 66505-0271

www.kpqg.com



Nayola Norris' Snowmen at the Window.



Carol H. Elmore
Quilt and Quilted Textile
Appraisals, Lectures, and Workshops

Written and Oral Appraisals of antique quilts,
contemporary quilts, & other quilted textiles for:
Insurance replacement value,

Fair market value, & Donation value

Carol is a certified American Quilter's Society Appraiser.
Appointments available for home, quilting groups, coffee
groups, or others. All appraisals are confidential
Call (785) 537-7221

Reminder: to sell items at the guild meeting, call
Margie Young 539-2063, to arrange for the room.



The *Prairie Pointer* is the monthly newsletter of Konza Prairie Quilters' Guild. Membership is open to all those interested in quilts and quilting. Yearly dues are \$35 and include 12 Opportunity Tickets, admission to all meetings, monthly newsletter, access to library materials, block of the month patterns, and opportunity to participate in workshops, field trips and public events. Guests are welcome to attend twice before joining.